

DryJect® – the ideal machine for aerating and amending turf in one pass – is now available for direct sale.



In some regions, DryJect® is only available in conjunction with a franchised Service Center. But in select areas, DryJect equipment is available for direct sale.

IMPROVES NATURAL TURF AND SOIL HEALTH AT MANY VENUES

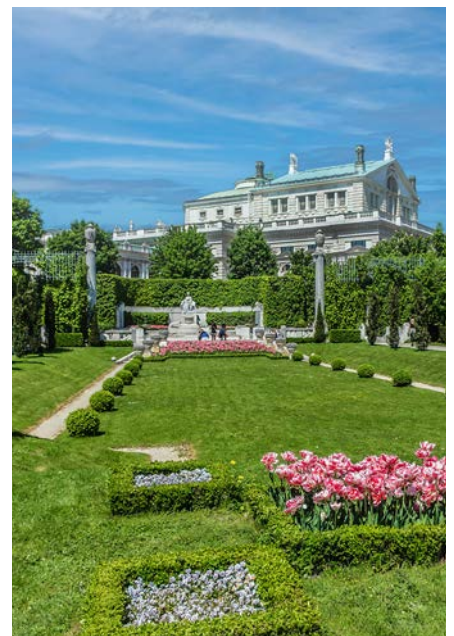
GOLF COURSES



SPORTS PITCHES

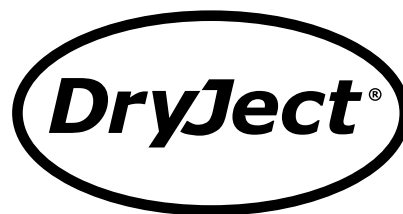


TOURIST SITES





DryJect® aerates *and* amends high-value natural turf in a single step!



Now available for direct purchase in some locations. *



The industry leader in injection aeration

Greatly reduces closures and lost revenue from traditional aeration. DryJect leaves lawns and playing surfaces smooth and playable as soon as the treatment is complete. DryJect technology is proven agronomically effective since 2002, and is used worldwide on thousands of lawns and pitches - including in preparations for many professional golf tournaments.



Ideal for Sports Pitches

DryJect injection aeration and amendment can help heavily used and worn sports turf recover more quickly. It helps maintain healthy grass for optimum playing conditions and player safety for all levels of play.

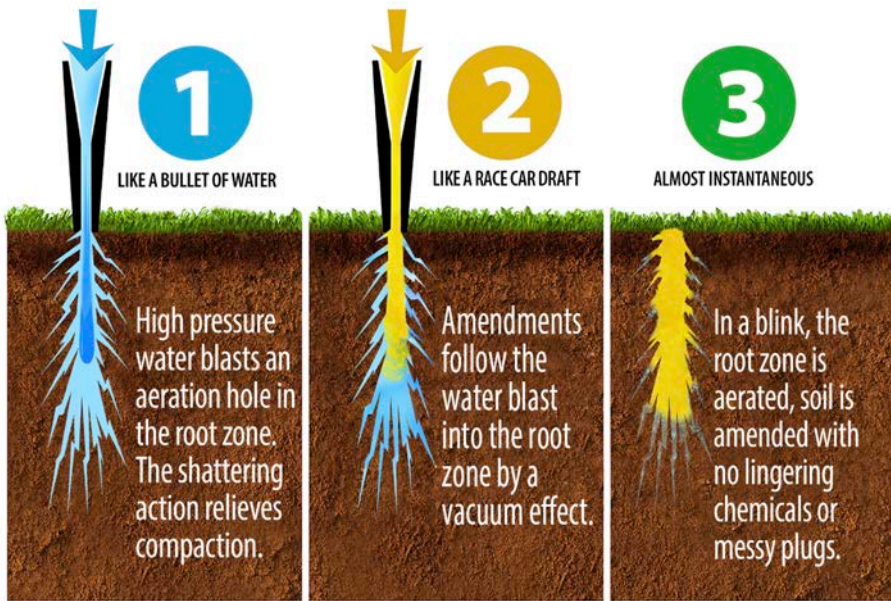


Perfect for Public Gardens, Parks, Tourist Sites

Visitors to important outdoor sites expect to be thrilled. DryJect aeration equipment helps natural grass stay healthy and beautiful by reducing plant tissue damage resulting from traditional invasive aeration techniques.

* *Inquire if DryJect equipment is available in your location.*

How DryJect® Works



Many different types of products can be injected into the soil through the DryJect machine, wet or dry.

- Porous ceramics
- Organic fertilizers, amendments
- Biochar products
- Sand / peat mixtures
- Water-saving polymers
- Pelletized dry products
- Wet sand and mixtures
- Blends of different material kinds
- More

DryJect uses a high-speed, water-based injection system to blast aeration holes through the turf and root zone to fracture compacted soil allowing air and water to move freely, creating healthy conditions for growing roots. The novel vacuum technology simultaneously fills holes to the surface with high volumes of sand or

other amendments. Aeration holes can be adjusted to your requirements. In a single pass, DryJect relieves soil compaction, increases water infiltration rates and air access, and leaves the soil surface, such as on golf putting greens, smooth and playable.

Modifying Golf Course Greens, Approaches, Tees, and Fairways

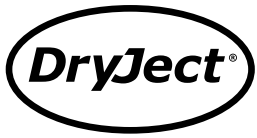


In this application, intensive soil modification was required. The DryJect machine was used twice over the same area, increasing the benefits of immediate compaction relief while helping dilute high organic matter, increasing water infiltration, and leaving the surface ready to play. At golf courses, DryJect can complement or even replace core aeration, depending on soil conditions and cultivation preferences.

Helping Keep Sports Pitches in Optimum Playing Condition



From profession competition to fields used at all levels of organized play, healthy natural grass is essential for a smoother, safer, more uniform playing surface. A well-maintained pitch sets the stage for players giving their best because they are more confident on reliably firm footing. Natural grass pitches are required at high levels of play, versus synthetic field.



What DryJect® Can Do For You

GOLF COURSES
SPORTS PITCHES
TOURIST SITES

Agronomically Effective – Deep aeration holes are filled completely when injecting into putting greens. Depending on spacing and depth requirements, 6–25 tonnes of sand can be injected per 4000 square meters. Lighter ceramics and similar materials will weigh close to 38% of sand.

GOLF COURSES
SPORTS PITCHES

Exceptionally Fast – DryJect aerates, topdresses and amends in one operation. DryJect requires minimal cleanup. There are no plugs, and there is very little negative impact to the playing surface. Generally, one DryJect unit can treat 9 or more greens per day.

GOLF COURSES
SPORTS PITCHES

Revenue Enhancer – DryJect allows for minimal down time for golf and sports play. In golf, there is minimal lost revenue due to poor playing conditions. [Click here](#) to calculate your cost effectiveness with our Golf Revenue Recapture Calculator. [Or download](#) our Golf Savings Worksheet (Microsoft Excel File).

GOLF COURSES
SPORTS PITCHES
TOURIST SITES

Cost Effective – DryJect reduces the number of workers needed for grass turf aeration and clean up. There are no soil plugs to handle. This helps reduce labor costs and free up maintenance staff. Staff can concentrate on other maintenance tasks to improve the overall playing experience.

GOLF COURSES
SPORTS PITCHES

Highly Versatile – DryJect depths can be adjusted from 5 cm to 23 cm (2 to 9 inches) depending on soil type and compaction. Injection depth can be matched to support the level of firmness desired in golf course greens and approaches.

SPORTS PITCHES
TOURIST SITES

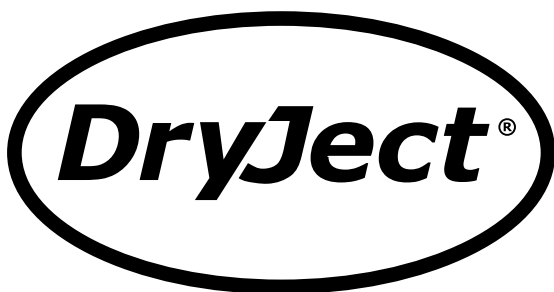
Virtually Invisible – DryJect requires minimal cleanup, and there is no messy residue to clean up on sports pitches or visitor sites.

GOLF
SPORTS PITCHES
TOURIST SITES

Helps Immediately – During the playing season, a quick DryJect treatment can relieve stressed areas when needed most, where traditional aeration could cause added stress to such areas. This is especially the case in warm conditions, such as mid-summer.

Machine Specifications

Weight	580.6 kg empty
Overall Dimensions	1.24 m H x 1.23 m W x 3.0 m L
Power Supply	40 HP Briggs & Stratton Vanguard
Water Requirement	45.6 LPM
Injection Pressure	Variable – 150 to 235 Bar
Injection Spacing Variable - (cm)	2.5, 3.8, 5, 6.3, 7.6, 8.9, 10.1, 12.7, 15.2
Hopper Capacity	0.11 cu. meter
Amendment Rate	Variable, 6 to 25 tonnes per .4 ha



Hong Kong | Singapore | Malaysia | Australia
Email: info@centaur-asiapacific.com
Website: www.centaur-asiapacific.com

