

Hydrowick

Your Cost Effective
Drainage Solution



THE INSTALLATION PROCESS



With the patented modified sandbander, installation is quick and seamless with no excessive excavation, complicated pipe maintenance, and expensive french drain work. Our Installation technique doesn't require shutting down for long periods of time and ensures playability within 24 hours

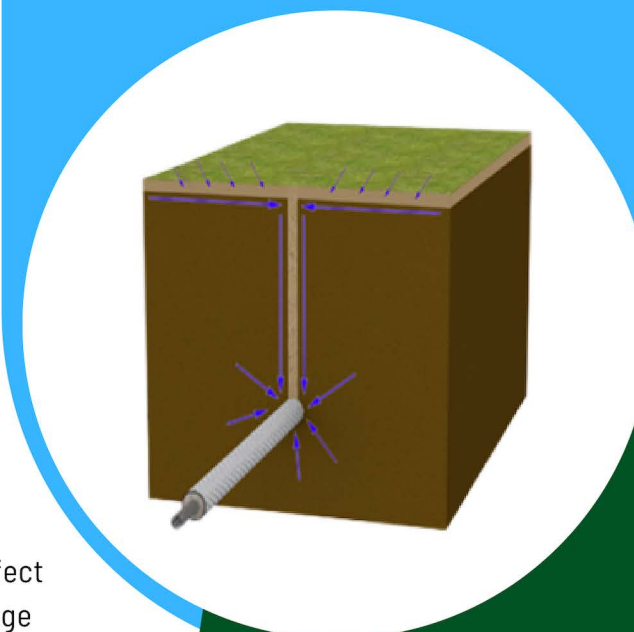


Hydrowick is the only drainage system that can be installed into playing surfaces at narrow, 1 meter spacing for more efficient drainage.

Layering is common in putting green soils and sports surfaces, occurring when a sandy root zone overlies a finer texture native soil, which is typical after years of topdressing, resulting in "wet soil" problems for turf. Even in USGA profiles, excess water tends to perch where the sandy root zone interfaces with the gravel layer.

Hydrowick elements are placed at the bottom of a narrow sand curtain, which gives trapped water, at the soil interface, an exit route. The unique element has an open stainless steel mesh core to remove large amounts of water quickly through gravity flow. The element is made of highly conductive fibreglass, which has a matching pore size of a medium sandy root zone.

The result is a system that drains quickly and wicks away excess moisture with capillary suction throughout the day.

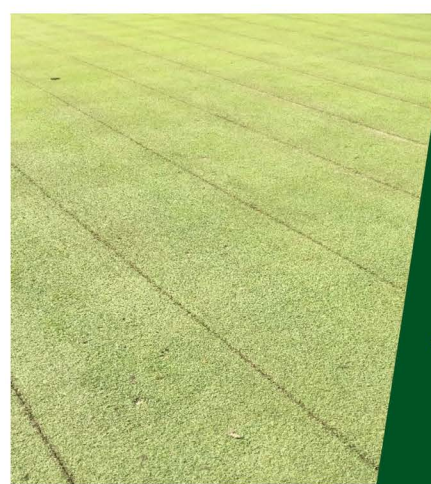
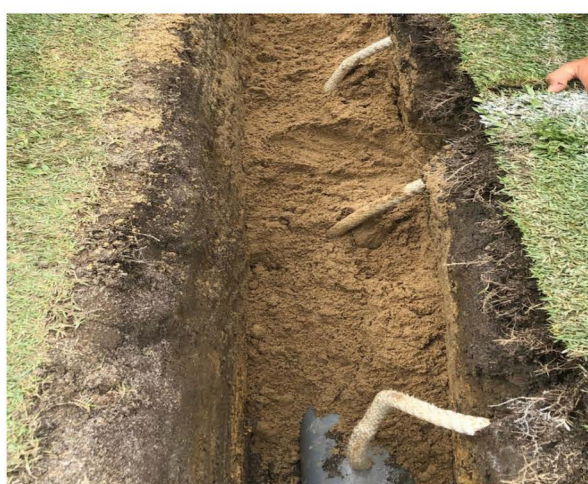


25mm fibreglass element draws water through capillary action



Stainless steel core carries water away quickly

Hydrowick creates an effective "hanging water column" suction effect that follows the contours of any surface, is installed where drainage problems exist, and helps improve turf health by providing better drainage in chronically wet soils.



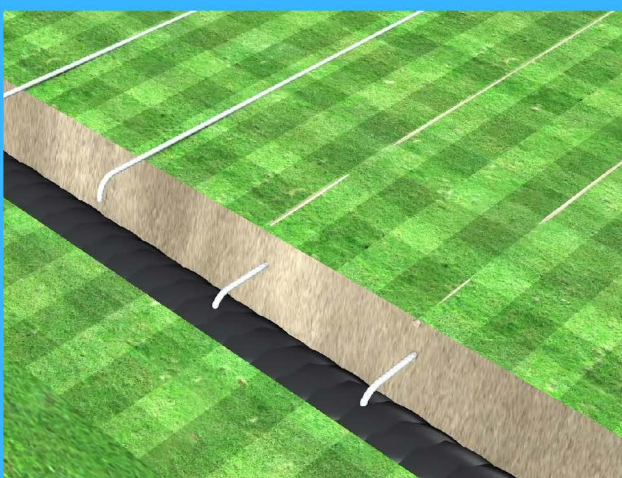
- ✓ Maximize Playtime
- ✓ Minimize Downtime
- ✓ Improve Aesthetics
- ✓ Improve Turf Quality
- ✓ Reduce Damage Potential
- ✓ Reduce Labour & Workload

Hydrowick works so effectively by creating a capillary draw in the soil profile resulting in superior drainage rates. Hydrowick can be readily installed at narrower spacing and without trenching. Hydrowick provides a rapid, economical drainage system with minimum surface distribution.

The inner, open core, of the Hydrowick element provides a great flow capacity. The ability of the Hydrowick element to maintain a hanging water column, provides additional capillary drainage and removes water that would not be accessible with a conventional pipe system.

How Hydrowick Works?

The narrow (25mm) sand curtain at 1m spacing drains water faster than conventional drainage



Commercial Landscaping - Green Spaces and Playing Areas



Parks and Recreation - Athletic Fields and Public Parks



Land Development - Channelling Water Between Grades



Residential Landscaping - Retaining Walls, Lawns



Golf - Fairways, Greens, Tees and wet areas



CENTAUR

ASIA PACIFIC

HONG KONG | SINGAPORE | MALAYSIA | AUSTRALIA



The sandbanding installation process ensures a quick installation, minimalizing invasiveness and reducing unsightly wear and closure needed for traditional piped drainage.

[Watch Video](#) (Click / Scan QR Code)

WWW.CENTAUR-ASIAPACIFIC.COM | INFO@CENTAUR-ASIAPACIFIC.COM